

Products



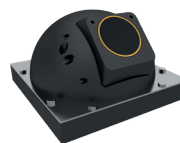
Specifications

Fluvius TT ECM IE

Travel time system with digital signal processing

Acoustic Paths	1 to 8, length 1-1000 m
Frequency	15, 28 and 200 kHz
Accuracy	± 2 % (typical)
Display	4 lines, 20 characters
Datalogger	internal, sampling interval user selectable
Communication	RS-232, Modbus, Ethernet, USB
Inputs	max. 8 x 4-20 mA
Outputs	max. 4 x 4-20 mA, 2 x Relay, 2 x Pulse
Power Supply	85-264 V _{AC} (50-60 Hz) or 24 V _{DC}
Battery Backup	integrated 2 Ah
Enclosure	Aluminium, wall mounted

Transducers



Specifications

TD-15/17

TD-28/18

TD-200/5

TD-200/8

Frequency	15 kHz	28 kHz	200 kHz	200 kHz
Typical Channel Width	> 400 m	400 m	100 m	30 m
Dimensions	Ø 368 mm, Height 121 mm	Ø 183 mm, Height 142 mm	Ø 340 mm, Height 170 mm	Ø 218 mm, Height 109 mm

Commonly used transducer frequencies for various path lengths and sediment loads.

Sediment load in g/m³

