



Cold
water

GWF



UNICO®

Single jet consumption meter
for cold water up to 30 °C
DN 15, 20

Your benefits

- Robust, high grade wear resistant materials:
Excellent measuring stability and reliability
- Measurement of low flow rates:
Increased cost effectiveness

Application

- Residential consumption monitoring of
water consumption within an entire building
- Wall installation
- For nominal flow rates up to 4 m³/h

Features

- Single jet dry-dial meter with magnetic coupling
- Register can be turned for best readout position
- Maximum operating pressure PN 16 bar
- Maximum operating temperature 30 °C
- Horizontal or vertical installation
- 5 dial resolution
- High grade wear resistant and corrosion proof materials
- Inlet strainer
- Reconditionable and recyclable execution
- **CE** Conformity according to European Measuring Instruments (MID)

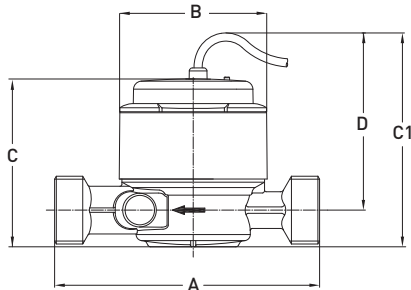
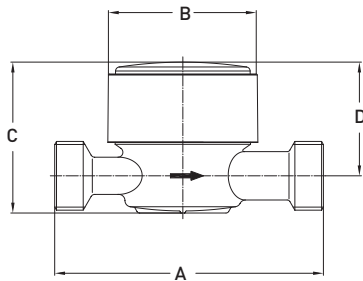
Options

- Reed pulser IPG14 for the transmission to remote or centralised
indication devices (Standard pulse value 10 liters)
- Other measuring ranges
- 1" NPSM connection thread on meter for 130 mm execution
- Other pulse values
 Documentation: IPG14 – EPe40217

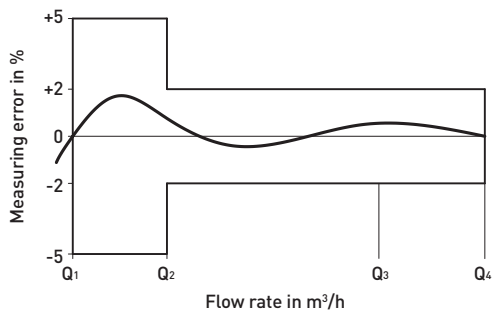
Installation

Pipeline:	horizontal	—
	vertical	
Meter head:	upwards	↑
	sideways	← →

Dimension Diagram



Measuring error curve



Technical Data

			15	20	20	20
Nominal diameter	DN	mm	15	20	20	20
Operating pressure	PN	bar	16	16	16	16
Connection thread on meter	G...B	Zoll	¾	1	1	1
Connection thread on coupling	R...	Zoll	½	¾	¾	¾
Nominal flow rate	Q ₃	m ³ /h	2,5	2,5	2,5	4
Maximum flow rate	Q ₄	m ³ /h	3,125	3,125	3,125	5
Partial limit horizontal ±3%	Q _{2h}	l/h	50	50	50	80
Partial limit vertical ±3%	Q _{2v}	l/h	100	100	100	160
Minimum flow rate horizontal ±5%	Q _{1h}	l/h	31,3	31,3	31,3	50
Minimum flow rate vertical ±5%	Q _{1v}	l/h	62,5	62,5	62,5	100
Temperature		max. °C	30	30	30	30
Measuring range horizontal			R80	R80	R80	R80
Measuring range vertical			R40	R40	R40	R40

Dimensions and weights						
Length without couplings	A	mm	110	110	130	130
Length with couplings		mm	184	202	222	222
Width	B	mm	72	72	72	72
Height without Reed pulser	C	mm	72	72	72	72
Height with Reed pulser	C1	mm	108	108	108	108
Height from pipe centre	D	mm	90	90	90	90
Weight without couplings		app. g	610	640	700	700

Typical Head Loss Curve

