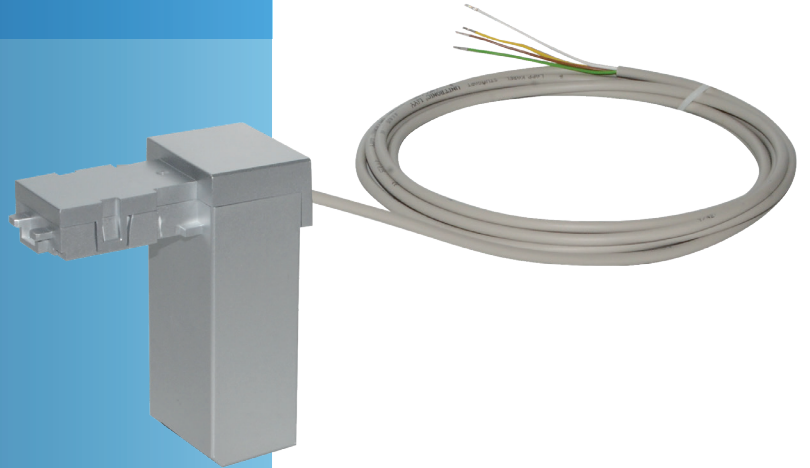




WATER

PULSE MODULE

Sonico®
NFC-Communication module



Your benefits

- > High-resolution:
Pulse output with water flow direction detection
- > High flexibility:
2 Pulse modules can operate simultaneously with different pulse values e.g. 1 l and 1000 l
- > Water proof design:
Sealed housing (IP68)
- > Plug & Play:
Easy and fast on-site installation with auto NFC interface-detection
- > Electrical Isolation:
Meter and pulse module are galvanically separated
- > No switch bounce:
Stable electronic pulses

Features

- > Snap-in NFC module slots – no connectors or cables needed
- > Continuous and tamper-proof connection, thoroughly reliable results
- > Can be factory fitted or retrofitted at installation site without breaking metrological seal
- > Provides a high-resolution pulse output of 0.1 l up to max. flow
- > Compatible with all versions of sonico® meters
- > Communication settings between meter and pulse module over encrypted IR interface
- > NFC port – Data security via AES-128-bit end-to-end encryption
- > Infrared configuration interface – Data security via AES-128-bit end-to-end encryption
- > CE Approval

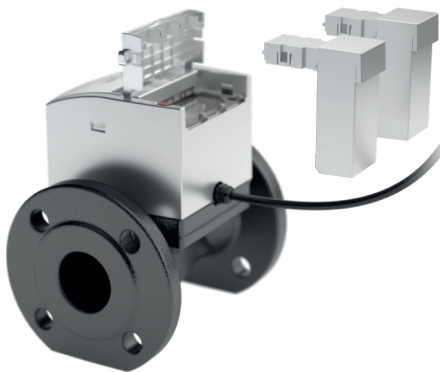
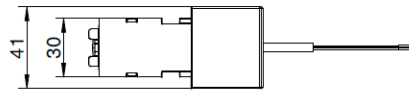
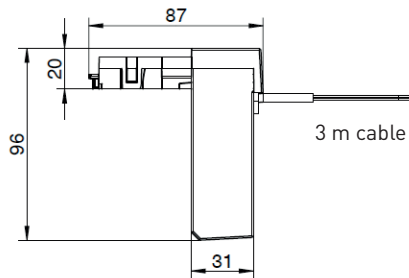
Applications

- > Data logging in combination with various data loggers
- > SCADA system
- > Building management system
- > Industrial control applications
- > IoT modules
- > Installation in harsh and flooded environment

Modes

Operating modes		
Mode 1	Channel 1 (white): Balanced forward pulses	Channel 2 (yellow): Error (empty pipe)
Mode 2	Channel 1 (white): Forward pulses	Channel 2 (yellow): Reverse pulses
Mode 3	Channel 1 (white): Forward or reverse pulses	Channel 2 (yellow): Flow direction: Signal high: Forward Signal low: Reverse

Dimensions (mm)



Technical data

Specifications	
Compliance with standard	EN 300 220
Approval	CE
Protection class	IP68
Cable length/ Supplied	3 m including cable joint for cable extension
Weight	approx. 243 g

Power supply	
Voltage	24 V DC +20 % / -10 % (19.2 – 26.4 V DC) No battery included
Current	200 mA

Pulse output	
Max. switching capacity	4 W
Max. current	0.2 A
Max. voltage	48 V DC

Conditions	
Operational temperature	-10 to +60 °C
Storage temperature	-10 to +70 °C
Relative humidity	0 to 100 % (IP68)

GWF

GWF MessSysteme AG
Obergrundstrasse 119
6005 Lucerne, Switzerland

T +41 41 319 50 50
F +41 41 310 60 87
info@gwf.ch

Technical support
T +41 41 319 52 00
support@gwf.ch

→ gwf.ch