



# MTH

Multijet meter  
for hot water up to 266 °F

## Your benefits

---

- Robust, high grade wear resistant materials:  
**Excellent measuring stability and reliability**
- Measurement of low flow rates:  
**Increased cost effectiveness**

## Application

---

- For use in measurement of hot water in commercial and industrial applications where flow is in one direction only.

## Features

---

- Multijet impeller wheel, super dry-dial with magnetic coupling
- Register can be turned for best readout position
- Maximum operating pressure 232 psi
- Maximum operating temperature 266 °F
- Horizontal installation
- US Gallon register
- NPSM threaded connection
- High grade wear resistant and corrosion proof materials
- Inlet strainer
- Reconditionable and recyclable execution

## Options

---

- Reed pulser IPG 14 with approx. 5 feet or 16 feet cable  
 Documentation: IPG14 - EPe40217

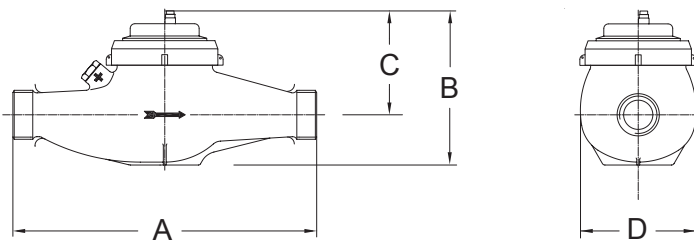
## Technical Data

Execution			MTH				
Nominal size		Inch	1/2	3/4	1	1 1/2	2
Operating pressure	PN	psi	232	232	232	232	232
Connection thread on meter		Inch	3/4" NPSM	1" NPSM	1 1/4" NPSM	2" NPSM	G2 3/8 B <sup>1)</sup>
Nominal flow rate ± 3 %	Q <sub>n</sub>	gpm	6.6	11	15.4	44	66
Maximum flow rate ± 3%	Q <sub>max</sub>	gpm	13.2	22	30.8	88	132
Transitional flow rate ± 3 %	Q <sub>t</sub>	gpm	0.66	0.88	1.23	3.52	5.28
Minimum flow rate ± 5%	Q <sub>min</sub>	gpm	0.26	0.22	0.31	0.88	1.32
Temperature		max. ° F	266	266	266	266	266
Measuring range	Q <sub>min</sub> /Q <sub>n</sub>		1:25	1:50	1:50	1:50	1:50

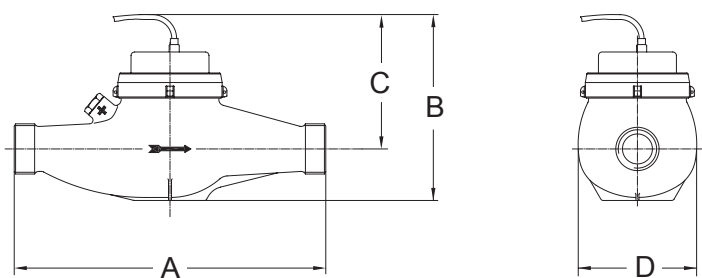
<sup>1)</sup> Couplings with connector tailpiece 2" NPSM available

Dimensions and weights			MTH				
Length without couplings	A	Inch	6.5	7.48	10.24	11.81	11.81
Total height w/o Reed pulser	B	Inch	4.61	4.84	5.24	6.26	6.81
Total height with Reed pulser	B	Inch	5	5.24	5.63	6.65	7.2
Meter height from pipe centre line w/o Reed pulser	C	Inch	2.91	3.27	3.54	4.45	4.57
Meter height from pipe centre line with Reed pulser	C	Inch	3.31	3.66	3.94	4.84	4.96
Meter width	D	Inch	3.74	3.74	3.94	5.31	5.94
Weight w/o couplings		app. lbs	3.97	4.63	5.95	11.68	12.79
Weight with couplings		app. lbs	4.63	5.29	7.05	14.11	16.31

## Dimension Diagram w/o Reed pulser



## Dimension Diagram with Reed pulser



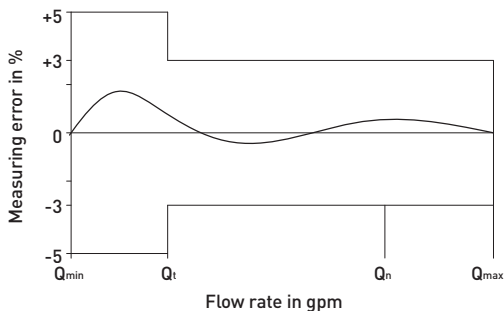
## Installation

Pipeline: horizontal —  
 Meter head: upwards ↑

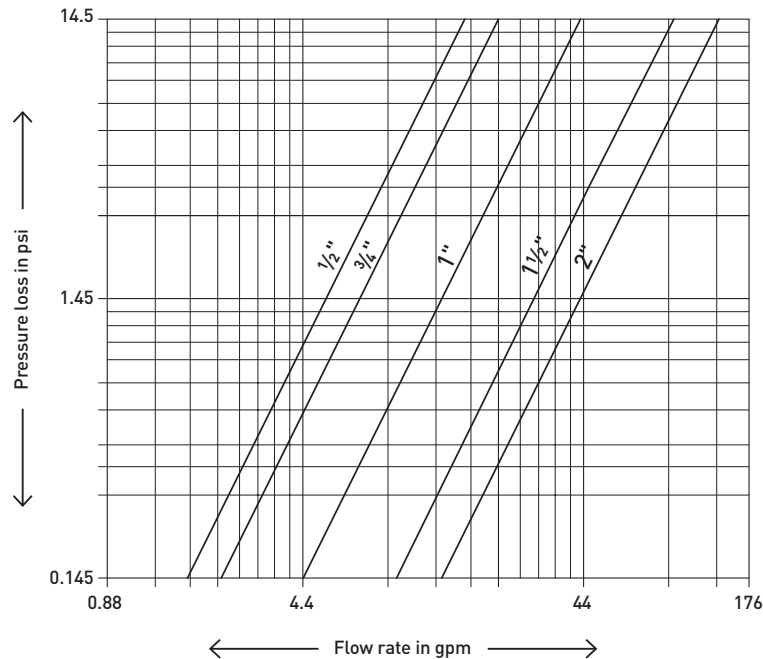
## Materials

Housing: Brass (DIN 50930-6)  
 Sealing plate: Brass (DIN 50930-6)  
 Impeller: PA resp. PPS  
 Strainer: PVDF  
 O-Ring: EPDM

## Measuring error curve



## Typical Head Loss Curve



## Pulser

The IPG 14 pulser consists of a molded insert with a clear housing to read the totalizing register. The pulse element is a dry contact reed switch rated at 4 Watts, max. voltage 42 V AC/DC, 18 Ohm resistance, approx. 10 Mio. switching cycles. The unit requires power from an external source and normally is wired in series with no regard to polarity, approx. 5 feet of 2-wire unshielded cable exist in a sealed fitting.

## Pulse value table

Pulse values	1/2" - 1"	1*	10
(1 Pulse = ... US Gallons)	1 1/2" / 2"	-	10

\* Only available in measuring range 1:25

GWF MessSysteme AG  
Obergrundstrasse 119  
6005 Lucerne, Switzerland

T +41 41 319 50 50  
info@gwf.ch, www.gwf.ch

Technical support:  
T +41 41 319 52 00, support@gwf.ch

---

printed in  
switzerland

Subject to modification, 27.10.2021 – EPe20139